

Retrofit Non-Return Valves

- Unobtrusive to natural flow
- A proven flood prevention method
- Helps to protect homes, properties, commercial buildings, roads etc
- Also suitable as rodent deterrents with rat block features
- Maintenance free
- Fit into existing manhole in minutes
- WRc Approved™



Flexseal's Non-return valves allow sewer or surface water materials to freely flow in the direction of the systems mains but block backflow of those materials in the opposite direction in instances, such as, flooding.

Flexseal's range of retrofit Non-Return Valves (NRV's) can be installed directly into existing manholes by simply pushing the NRV into the desired pipe inlet. The product prevents foul water flowing back from the blocked sewerage systems to flood the property from the inside via toilets, plug holes and waste pipes.

The Retrofit NRV's can be fitted in minutes and do not require any specialist expertise or equipment.

Users also benefit from protection against rodent infestation. The stainless steel reinforced flap helps to block rats and other rodents and insects from traveling up pipes and into homes and commercial buildings.



Fit horizontally



NRV100
for DN100 pipe inlets

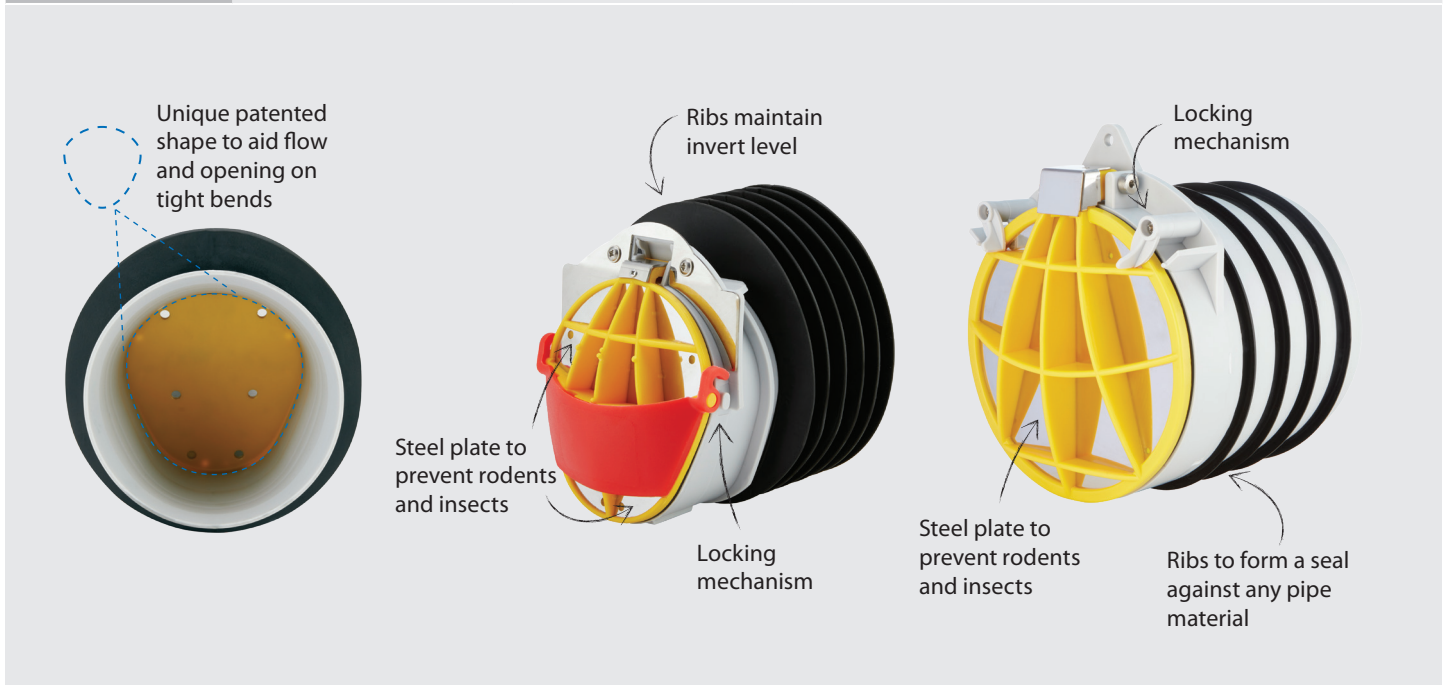


NRV150
for DN150 pipe inlets



Product Code	NRVXXX
Description	Flexseal Retrofit Non-Return Valve
Size Range	DN100 - DN150
Material	Polypropylene 430 Stainless Steel TPE
Temperature Range	-50°C to 80°C constant, 100°C intermittent
Standards	WRc Approved™ BS EN 681-1:1995 BS EN 1852-1:2018 BS EN 1088:1995 BS ISO 13562-1:2000 BS ISO 13562-2:2001

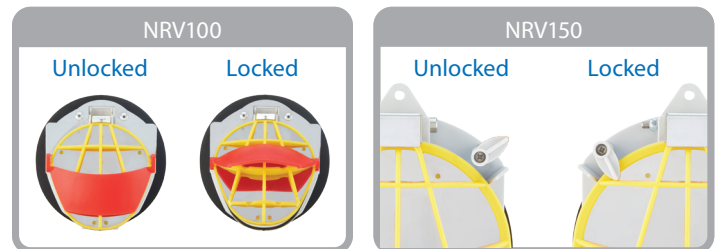
Product Code	Nominal Dia. (mm)	Size (mm)	Description
NRV100	100	97 - 106	Non Return Valve to fit DN100 pipe inlets.
NRV150	150	148 - 153	Non Return Valve to fit DN150 pipe inlets.





Installation

1. When opening an inspection chamber or manhole you must take the necessary safety precautions.
2. Lifting the manhole cover: this may take two people as it can be heavy.
3. Once the manhole cover is lifted, determine the direction of flow. This can be determined by flushing a toilet in the property.
4. You will need to fit Non Return Valves to each of the flow pipes from the property.
5. DO NOT install on the outlet of the chambers (where the water flows to) as this will cause a blockage. Only install NRV's on the chamber inlets.
6. Clean out the incoming pipes of any debris.
7. Take the NRV out of the box, put on gloves and push the NRV up the pipe inlet mouth. Use pipe lubricant sparingly if required.
8. Make sure the valve is positioned correctly in the pipe, with the flap position downwards and the hinge pivot point horizontal.
9. Ensure the locking mechanisms are unlocked for normal use.



General Information

Quality, Standards and Approvals

Flexseal has been certified by the British Standards Institution (BSI) as a company of assessed capability, with a quality management system which meets the requirements of BS EN ISO 9001:2015

Flexseal, part of the Fernco Group, are the leaders in wastewater connection innovation; utilising the most advanced methods and techniques for precision-manufactured products, all of which comply with or exceed relevant British and European standards to ensure reliability and sustainability.

Environment

Flexseal operate Environmental Management Systems which are certified to ISO 14001: 2015.

Supply

Flexseal are proud members of the Builders Merchants Federation (BMF). All Flexseal products are supplied through a national and global network of distribution and merchant partners. For stockist details, contact Flexseal.

Technical Support

Flexseal have a team of product experts on hand to support all customers with technical support and advice.

Contact Flexseal Technical Department:

Tel: +44 (0) 1226 344100

Email: technical@flexseal.co.uk

Enquiries

UK Sales:

Tel: +44 (0) 1226 340 888

Email: sales@flexseal.co.uk

International Sales:

Tel: +44 (0) 1226 344 105

Email: export.dept@flexseal.co.uk

