

Product Data Sheet

Puddle Flange PFT

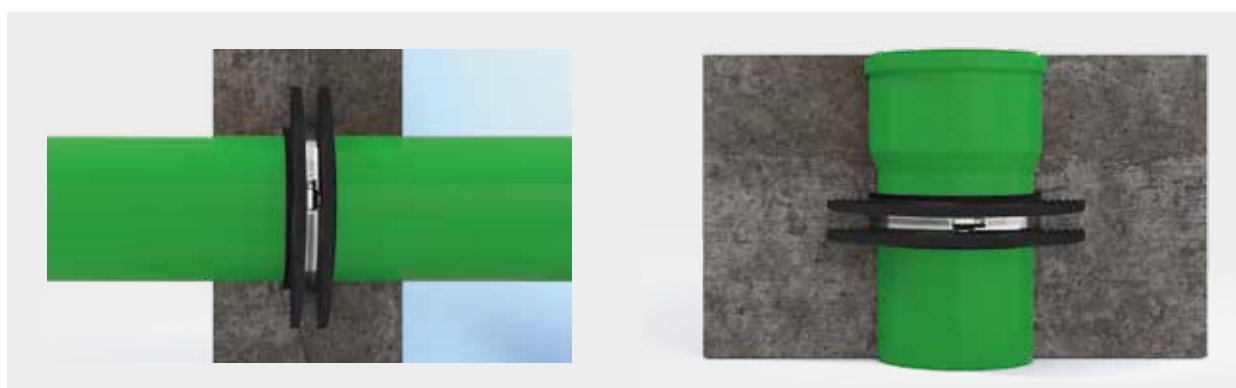


Reliable connections -
worldwide!

Product description:



Product Name	Puddle Flange PFT
Product Group	Pipe lead-trough
Product Code	PFT (was FRK)
Sizes	over 21 mm
Rubber	EPDM
Steel Quality	1.4301 / AISI 304 / V2A 1.4404 / AISI 316 / V4A
Pressure Rating	8 bar / 116 PSI
Vacuum	n/a
Shear load resistance	✓
Standards	EN 681-1, EN 10088-2
Shore Resistance	50
Temperature Range	-40 to 120 °C
Radon proof	✓
UV Resistance	✓
Oil / petrol Resistance	✗
Fire Performance	Class F
Soil Suitability	✓
Flush-mounted Suitability	✓
Tensile Strength	✗



Horizontal or vertical installation

For above-ground and underground applications

Note: All information is based on the current state of our technical experience at the time of preparation. If necessary, they must be adapted to any changes. We reserve the right to make technical changes. Our general terms and conditions of sale and delivery apply.

Product Code	Size Range (mm)	Net Weight (kg)	Torque (Nm)
PFT025	15 – 25	0.1	6
PFT032	26 – 33	0.1	6
PFT040	34 – 42	0.2	6
PFT050	43 – 54	0.2	6
PFT063	55 – 68	0.2	6
PFT075	69 – 83	0.2	6
PFT090	84 – 101	0.3	6
PFT110	102 – 118	0.3	6
PFT125	119 – 133	0.4	6
PFT140	134 – 148	0.4	6
PFT160	149 – 168	0.5	6
PFT175	169 – 190	0.5	6
PFT200	191 – 215	0.6	6
PFT225	216 – 240	0.6	6
PFT250	241 – 265	0.7	6
PFT275	266 – 290	0.7	6
PFT315	291 – 315	0.8	13
PFT325	316 – 340	0.9	13
PFT350	341 – 365	0.9	13
PFT375	366 – 390	1.0	13
PFT400	391 – 415	1.1	13
PFT425	416 – 440	1.1	13
PFT450	441 – 465	1.2	13
PFT475	466 – 490	1.3	13
PFT500	491 – 515	1.3	13
PFT525	516 – 540	1.4	13
PFT550	541 – 565	1.4	13
PFT575	566 – 590	1.5	13
PFT600	591 – 615	1.6	13
PFT630	616 – 640	1.6	13

Also available in **V4A (1.4404)**. Additional sizes on request.

Note: All information is based on the current state of our technical experience at the time of preparation. If necessary, they must be adapted to any changes. We reserve the right to make technical changes. Our general terms and conditions of sale and delivery apply.