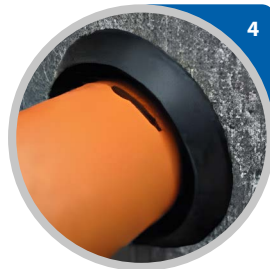


## Installation: Pipe Seal LSK



1. Using a suitable hole saw, core a hole to the specified diameter\* (see data sheet).
2. Press the seal into the drill hole as far as it will go (fold, if necessary). Do not use lubricant!
3. Measure the wall thickness and make a mark on the end of the pipe. Coat the inside of the seal with lubricant (Fernco white).
4. Push the pipe into the main pipe up to the marking.
5. Make sure that the pipe does not protrude into the main pipe!

\* For customised products (as per delivery note), the required core bore is 26 mm larger than the outer diameter of the service pipe.