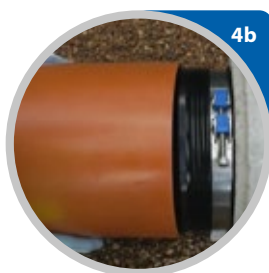


# Installation: Internal Coupling ICON IC



1. Check inner surfaces of the pipes. When there are major defects, the inner surface of the pipe must first be restored to ensure a smooth surface.
2. Coat both seals of the coupling with lubricant. **When connecting concrete pipes**, also apply lubricant to the inside of the pipe.
3. Push the Icon into the pipe that is already laid in the ground, all the way up to the stoppers. Position the clamping device at 12 o'clock. The DN 400, 500 and 600 versions have two turnbuckles; these should be positioned at 3 and 9 o'clock. Do not tighten the turnbuckle(s) yet!
- 4a. When connecting **DN 200, 250, 400 and 500 plastic pipes**, a KG push-on sleeve (with internal seal) is required. Push the sleeve over the sealing lips of the ICON. Ensure that the double sleeve encloses the seal around the entire circumference of the pipe. As the sleeve is pushed out of the ICON gasket again by the restoring forces of the rubber, it must be held in place

until it is finally tightened. A second person is helpful for this.

- 4b. **For all other pipes:** Slide the second pipe onto the collar up to the stoppers.
5. Tighten the M10 Allen screw(s) to 15 Nm using a torque spanner.

*If pressing water (e.g. high groundwater level) may be present, the gap between the connected pipes must be covered (shrink sleeve or mortar bell).*



Data Sheet available online at:  
[fernco.de/en/product/icon](http://fernco.de/en/product/icon)



Installation Video on YouTube:  
[qrco.de/bfWreK](http://qrco.de/bfWreK)