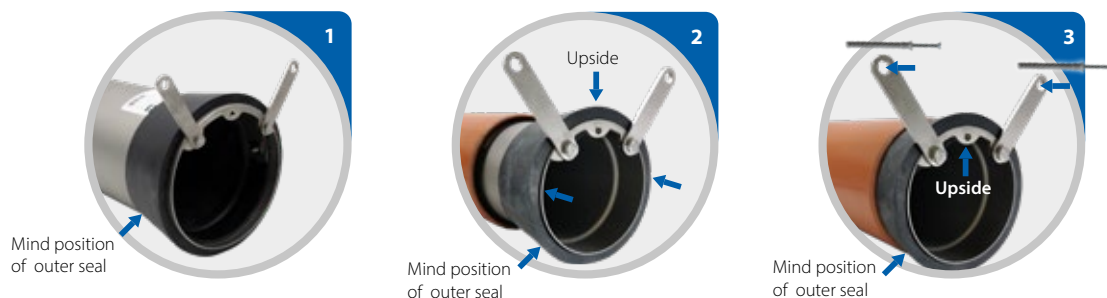


Installation:

Rückschlagventil MwStop® CV

Installation at the Pipe End – Outlet Side

- **Safety Note:** Always pay attention to your safety and follow the applicable guidelines on occupational safety and personal protective equipment (PPE).
- **Alignment:** Ensure that the valve is installed in the correct position (see right)!
- **Visual Inspection:** The MwStop® check valve should be checked twice (2) a year for defects or damage and contamination (in front of and behind the membrane). Create a photo documentation with a time stamp as proof.



1. Check if the seal is perfectly fitted. If necessary, push the seal into the correct position.
2. Push the valve into the pipe with both hands. Ensure that the valve is in the correct position (top). Pay attention to the position of the outer seal.
3. Mount the MwStop® check valve to the (manhole) wall using suitable screws.



Data Sheet available online at:
www.fernco.de/en/product/check-valve-mwstop-cv

Installation:

Rückschlagventil MwStop® CV

Installation at the Pipe End – Outlet Side



1. Pull the outer seal off the metal housing. Remove the mounting brackets.
2. Place the outer seal mirror-inverted at the other end of the housing (in the area of the membrane tip).
3. Screw the mounting brackets back on the other side of the valve.
4. Check if the seal is perfectly fitted. If necessary, push the seal into the correct position.
5. Push the valve into the pipe with both hands. Ensure that the valve is in the correct position (top). Pay attention to the position of the outer seal.
6. Mount the MwStop® check valve to the (manhole) wall using suitable screws.

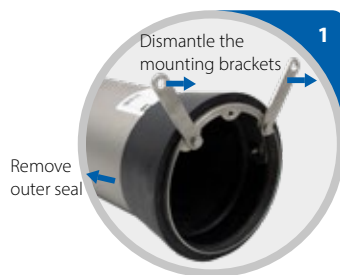


Data Sheet available online at:
www.fernco.de/en/product/check-valve-mwstop-cv

Installation:

Rückschlagventil MwStop® CV

Installation with flexible coupling



1. Pull the outer seal off the metal housing. Remove the mounting brackets.
2. Place the flexible coupling on to the end of the pipe. Use a screwdriver to fix the coupling properly.
3. Place the valve into the coupling. Ensure that the valve is correctly orientated (top). Fix the valve in the coupling with a suitable screwdriver.

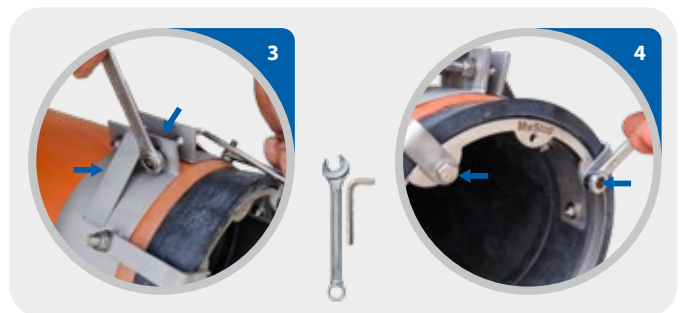


Data Sheet available online at:
www.fernco.de/en/product/check-valve-mwstop-cv

Installation:

Rückschlagventil MwStop® CV

Fixing Clamp at the Pipe End – Outlet Side



1. Check if the seal is perfectly fitted. If necessary, push the seal into the correct position
2. Use both hands to push the clamp onto and the valve into the pipe. Ensure that the valve is in the correct position (top) and pay attention to the position of the outer seal.
3. Secure the fixing clamp with the appropriate hex key. Ensure that the clamp is fastened securely.
4. Afterwards, tighten the hexagon head screws at the front of the valve.



Data Sheet available online at:
www.fernco.de/en/product/check-valve-mwstop-cv